

KKL2X95

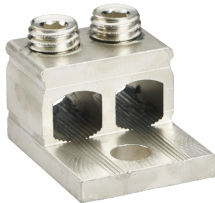
Cable Connectors

- Sales unit = 1 pc
- Suitable for Al/Cu cables
- Material: tin-coated aluminium
- IEC 61238-1 Class A
- Environmentally friendly materials

Conductors per cross section (mm²) table >>

KKL Installation Instructions >>

Compatibility tables >>



Data subject to change without notice. Always confirm the data is correct from the seller.

Product details

SKU	KKL2X95
Al mm²	16-95
Color	Standard
Cu mm²	16-95
E-Number	1942090
EAN	6419410378601
In (Al) (A)	400
In (Cu) (A)	490
Key size	Hex 6
Mounting	Bolt M10
Number of Conductors	2
Package size	48
Torque Al/Cu (Nm)	12 (16-50 mm ²) / 22 (70-95 mm ²)
Un (V)	690
Weight (lb/kg)	0.134 / 0.061

Dimensional drawing

